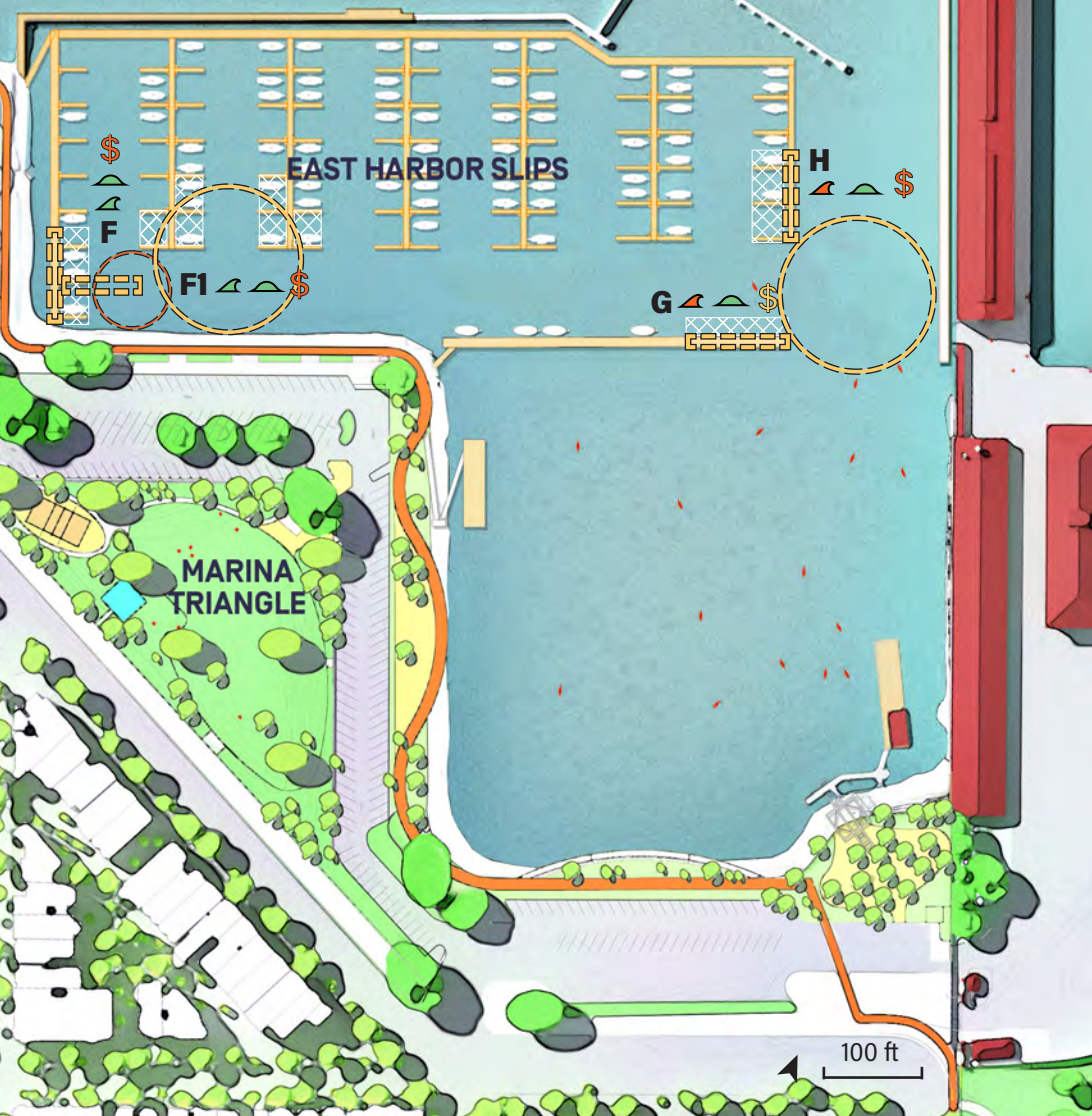
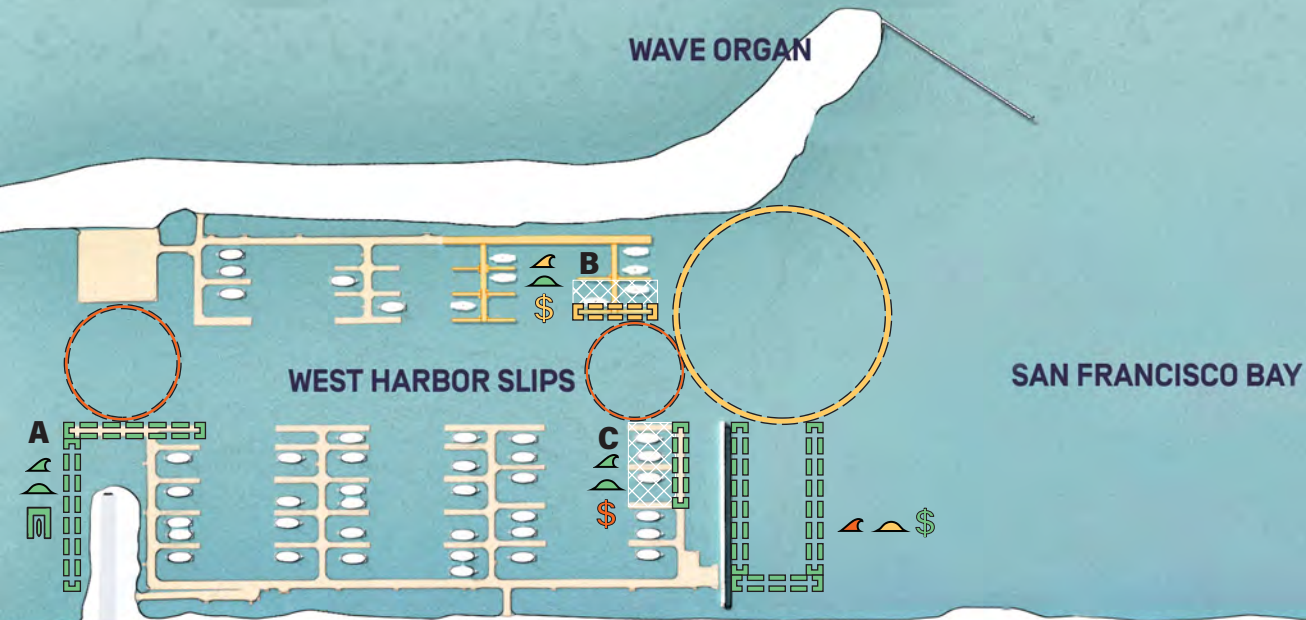


MARINA ALTERNATE FUEL DOCK LOCATIONS

LEGEND

- <0.8' |
 0.8'-1.6' |
 >1.6' Exposure to Northerly Storm Wave Ht.
- <0.2' |
 0.2'-0.4' |
 >0.4' Exposure to Westerly Swell Wave Ht.
- No Loss |
 - 1-4 berths |
 - 4 berths Loss of Berth Rental Revenue
- >65' |
 50-65' |
 <50' Turning Basin - Max Vessel Length
- >80' |
 70-85' |
 <70' Length of Dock
- Alternate Fuel Dock Location (A-I)
- Existing Fuel Dock (J)
- Lost Slips



Harbor-ID	Length of Dock	Distance to Entrance	Westerly Swell Wave Ht.	Northerly Storm Wave Ht.	Ease of Turning: Circle Dia	Docking: Berth Orientation	Ease of Truck Access-UST	Pipeline Dist UST to Dock	Vessel Length - for	Vessel Length - for Depth	Berth Rental Revenue	Total Score
	1: >80 ft 2: 70-80 ft 3: <70 ft	1: <300 ft 2: 300-600 ft 3: >600 ft	1: <0.2 ft 2: 0.2-0.4 ft 3: >0.4 ft	1: <0.8 ft 2: 0.8-1.6 ft 3: >1.6 ft	1: >200 ft 2: 100-200 ft 3: <100 ft	1: up/down wind 2: Quarter wind 3: Cross wind	1: Good 2: Poor 3: Inaccessible	1: <200 ft 2: 200-400 ft 3: >400 ft	1: >65 ft 2: 50-65 ft 3: <50 ft	1: >65 ft 2: 50-65 ft 3: <50 ft	1: No Loss 2: 1-4 berths 3: >4 berths	Sum Cols Ethru O- Lowest
WH-A	1	2	1	1	2	1	1	1	3	2	1	16
WH-B	2	1	1	2	2	1	3	3	3	2	2	22
WH-C	1	1	1	1	2	3	1	2	3	2	3	20
WH-D	1	3	1	1	1	3	1	3	1	2	2	19
WH-E	1	1	2	3	2	3	1	1	2	2	1	19
EH-F	2	3	1	1	3	3	1	1	3	3	3	24
EH-F1	2	3	1	1	2	1	1	1	1	2	3	18
EH-G	2	1	1	3	2	1	1	3	2	2	2	20
EH-H	2	1	1	3	2	3	1	3	2	2	3	23